



# The Belvedere

4 bedroom detached chalet bungalow

at Cloughan View



Braidwater

HOMES

# The Belvedere house

The Belvedere, a four bedroom chalet bungalow with ample family space, a bathroom, ensuite and a full turnkey finish.

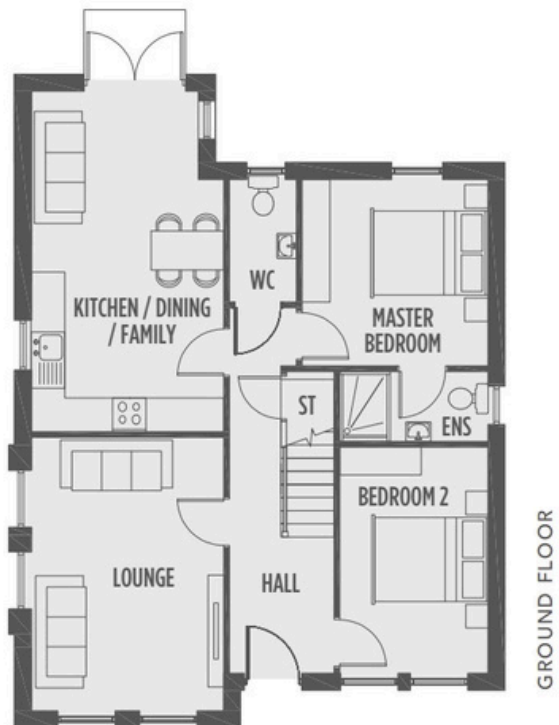
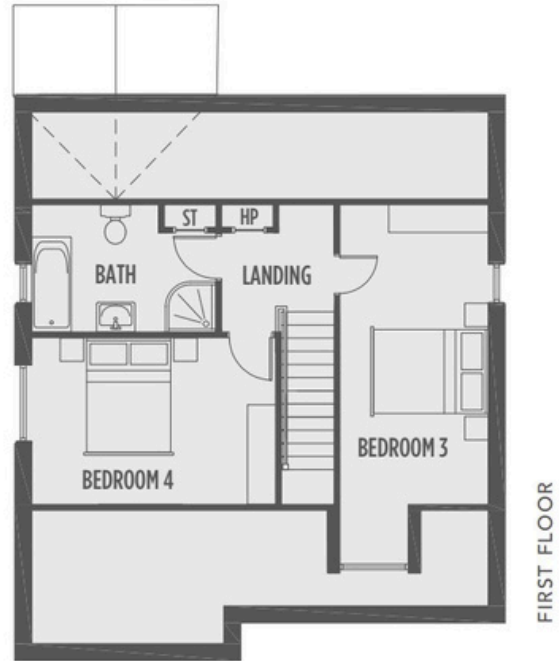
## The Belvedere

### GROUND FLOOR

Lounge	4.90m x 3.45m
Kitchen   Dining   Family	6.55m x 3.45m (max inc snug)
WC	2.20m x 1.20m
Master Bedroom	3.35m x 3.30m
Ensuite	1.25m x 2.55m
Bedroom 2	4.05m x 2.55m

### FIRST FLOOR

Bedroom 3	6.90m x 2.60m (max)
Bedroom 4	3.30m to 4.40m
Bathroom	2.60m x 3.35m(max)



To follow, are sample images of a finished Belvedere house with virtual furniture added in for context.

\* all images are for illustration only \*





# Family Time

## Kitchen:



\* all images are for illustration only \*

## Living room:







Master bedroom:



Downstairs bedroom or office/study:





# The Simple Pleasures

Bedroom 2:



Bedroom 3:





# A Sanctuary Space

The Rear Garden:



External finish:







Take Our Tour

click on the link for our Belvedere 3D walkthrough tour:

**[The Belvedere 3D walkthrough](#)**

**Selling Agent:**

Speak to Simon Brien Residential  
for more information and availability:

028 90668888

